
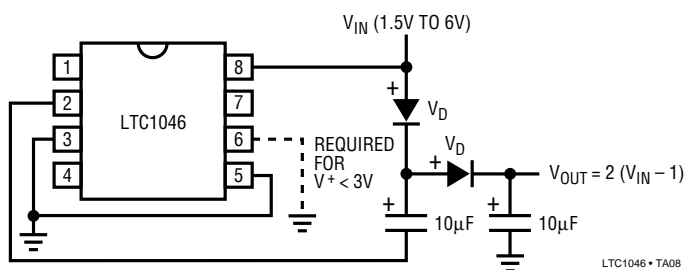


May 1998

Figure 8 of the **LTC<sup>®</sup>1046** data sheet is incorrect. Pin 5 was incorrectly left floating and should be tied to Pin 3. For complete specifications, typical performance curves and applications information, please see the **LTC1046** data sheet.

 LTC and LT are registered trademarks of Linear Technology Corporation.

## TYPICAL APPLICATIONS



**Figure 8. Voltage Doubler**

For further information regarding this specification notice contact:

Linear Technology Corporation  
1630 McCarthy Blvd.  
Milpitas, California 95035-7417  
Attn: Product Marketing Manager  
Phone: (408) 432-1900